



GROTON TOWN COUNCIL IS ACTING NEXT WEEK ON A DATA CENTER PROPOSAL

A giant data center of 250,000 square feet or more is being planned for the Holstein property located between Flanders and Hazelnut Hill Roads, south of Route I-95, and north of GOSA's Sheep Farm. See map on page 2. The Town-owned green parcel will be part of the data center land.

ATTEND A PUBLIC MEETING TO FIND OUT MORE
Please try to show up in person if you can!

WHERE? THRIVE 55+ SENIOR CENTER
102 Newtown Road next to GROTON LIBRARY on RTE 117
or...

Click [here](#) to view the meeting live on GMTV

WHEN? THURSDAY, FEB. 24TH 5:30 P.M.

WHY? ISSUES OF CONCERN INCLUDE NOISE, WATER, AIR QUALITY, HEAT, AND IMPACT ON WETLANDS AND STREAMS

Noise: Data Centers are essentially huge warehouses filled with computers and cooled with fans that run 24-7.

Water: Thousands of gallons of water used daily

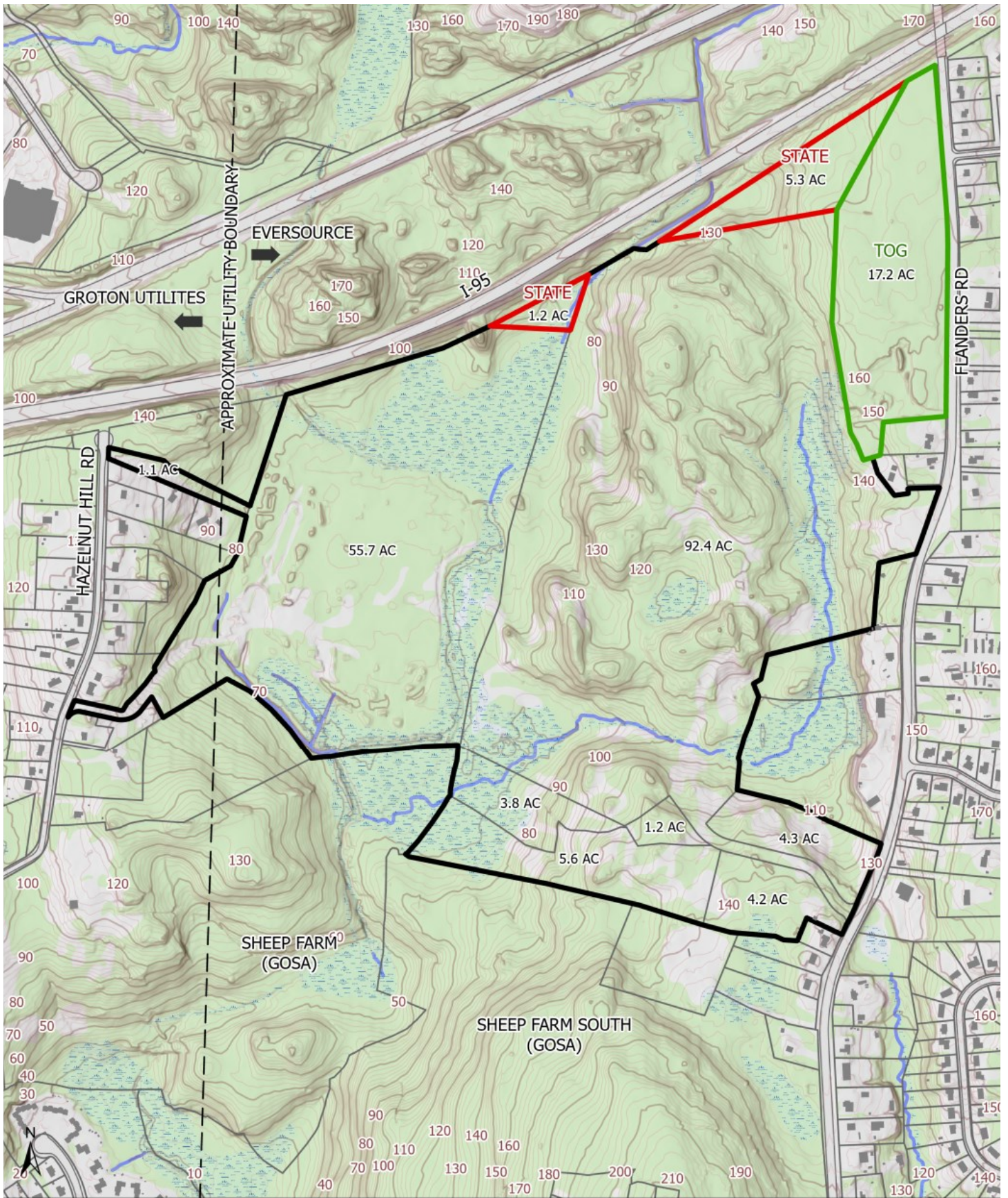
Air Quality: Diesel fuel is used to power generators that are tested regularly and keep the center running during power outages.

Heat: The heat given off warms the climate around the data centers

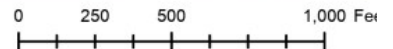
For more information on data centers, check Wikipedia.

For information on the impacts of this project contact:

Liz Raisbeck at 202-253-5752 or groconadv2017@gmail.com



- 327-449 Hazelnut LLC owned parcels
- State owned parcel
- Town owned parcel
- Parcel boundary
- Streams
- Woodland
- Buildings
- Wetlands (National Wetlands Inventory, US Fish & Wildlife Service)



Disclaimer:
The planimetric and topographic information depicted on this map was compiled by Fugro based on an aerial flight performed in April 2020. The parcel and property line information depicted on this map has been compiled from recorded deeds, maps, assessor records, and other sources of information in the Town of Groton. The intent of this is to depict a graphical representation of real property information relative to the planimetric features for the Town of Groton and is subject to change as a more accurate survey may disclose. The Town of Groton and the mapping companies assume no legal responsibility for the information contained in this data.
THIS MAP IS NOT TO BE USED FOR THE TRANSFER OF PROPERTY.

Horizontal Datum:
Connecticut State Plane Coordinates, North American Datum of 1983 (NAD83 Feet).

Vertical Datum:
North American Vertical Datum of 1988 (NAVD88).